



uTHUNGULU DISTRICT PCA REPORT 17/09/2014

General District Information – Location, Size & Population

- uThungulu District Municipality is situated in the Kwa-Zulu Natal Province and is bordered by iLembe, Umkhanyakude, Umzinyathi, Zululand and Indian Ocean.
- Total Area = 8 213 km²

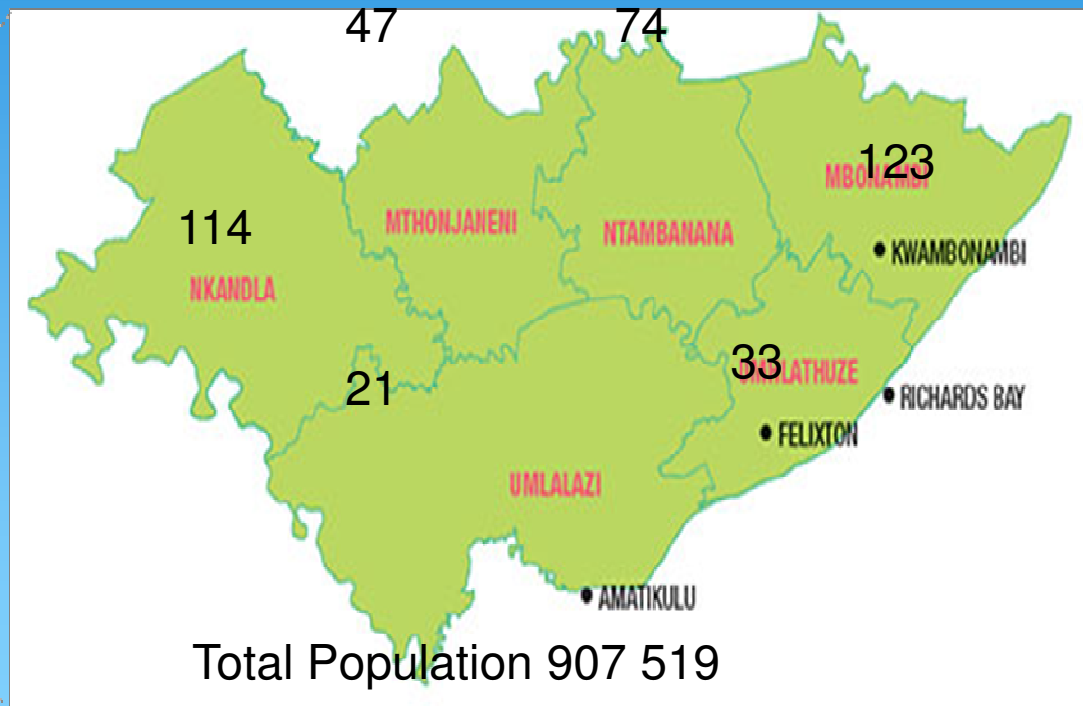
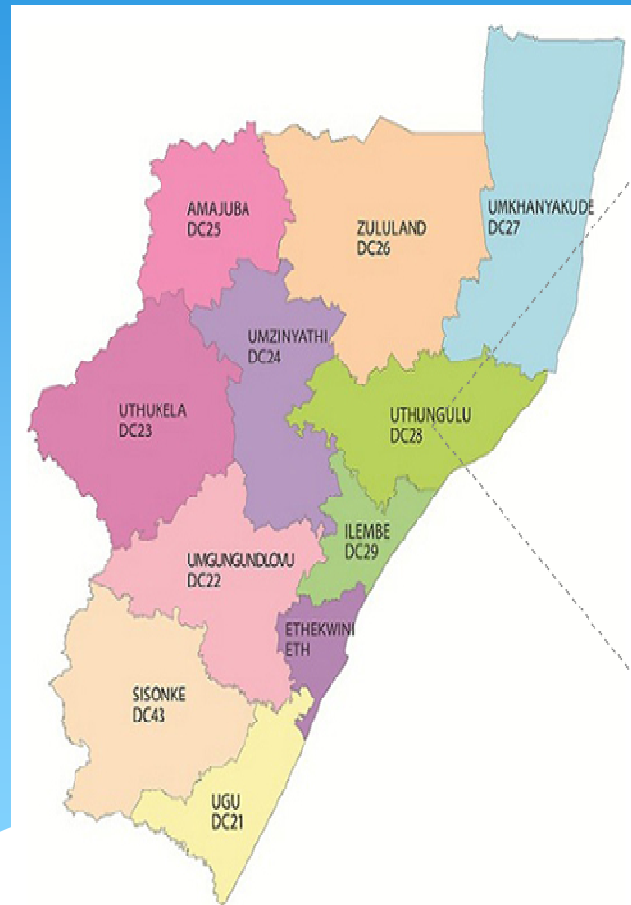
Sub-district Population		
Sub-district	Census 2011	DHIS 2011 - 2012
uMhlathuze	334 459	327 625
Nkandla	114 416	143 582
Mfolozi	122 889	117 550
Ntambanana	74 336	92 659
uMlalazi	213 601	242 396
Mthonjaneni	47 818	55 699
Total	907 519	979 511

- Density = 110 people/km² (SA average 41 people/km²)
- Population growth = 0.24% p.a.
- Dwellings: Formal (70.0%), Informal (2.3%), Traditional (26.8%)
- Languages: isiZulu (87.9%), English (5.0%), Afrikaans (2.2%) by

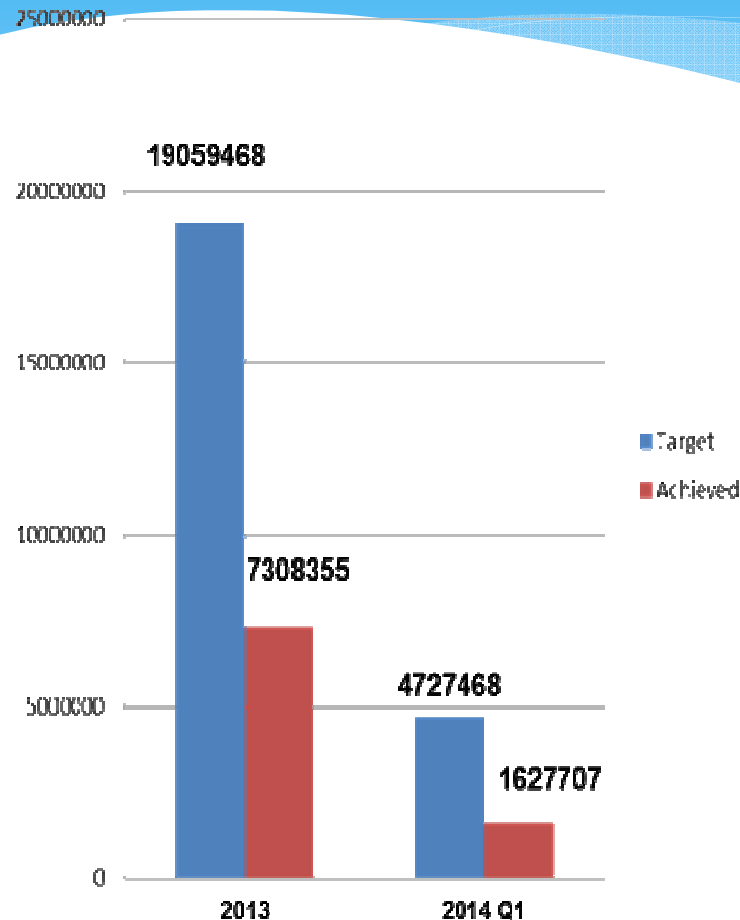
(STATS SA, 2012)



District Map & Population Size



MALE CONDOM DISTRIBUTION



- * Quarter 1 target was not reached.
- * **Scale-up activities that the District will embark on:**
 - * Establish additional secondary condom distribution sites (shops, taverns, taxi ranks, farm areas, tertiary institutions).
 - * Form partnerships with NGOs, traditional leadership, traditional health practitioners and business sector on condom distribution.
 - * Each community field worker to distribute 200 male condoms per day.
 - * 50 condoms will be pre-packed with medication for all PHC clients.
 - * Social mobilization on condom use by all government departments

NEW HIV TESTS CARRIED OUT

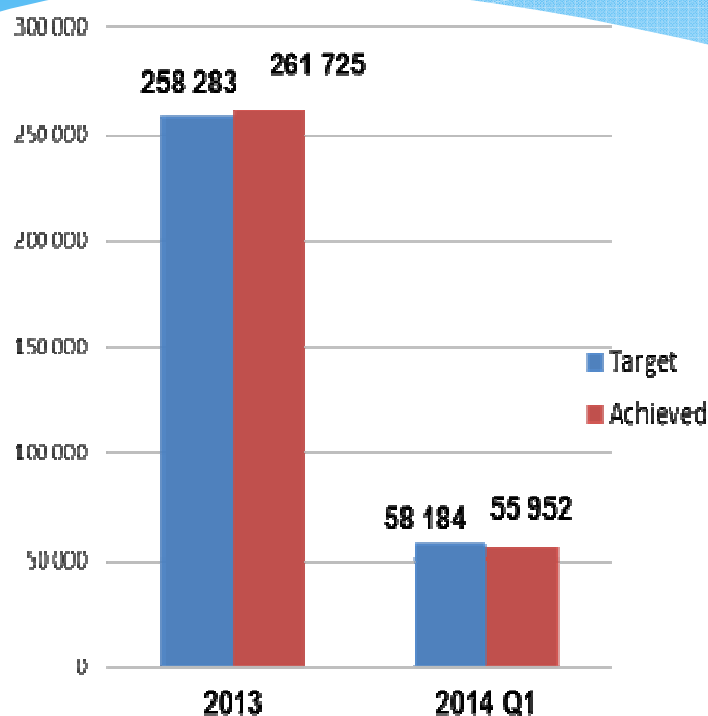
96% of Quarter 1 district target was reached.

What has the District done:

- Week long HCT/health blitz
- Hlola manje Zivikele campaigns through OSS
- Provider Initiated Counselling and testing for all (4 clients per day per clinician)
- Revival of nerve centers and nerve center meetings
- Zazi campaign

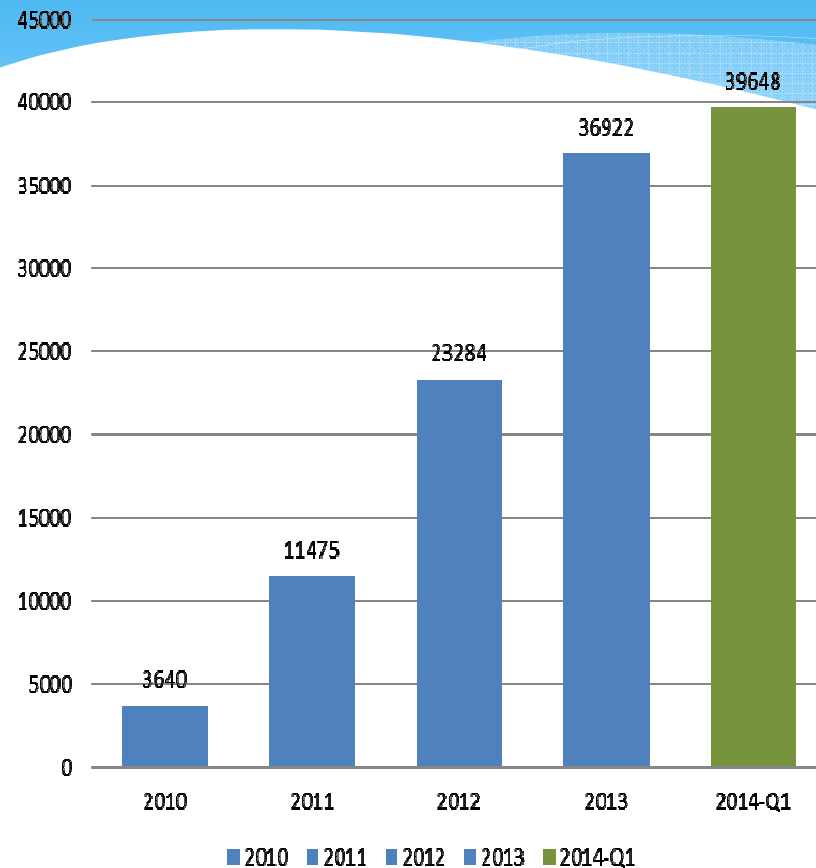
Scale-up activities that the District will embark on:

- “First-things-first” HCT campaign for high schools and tertiary institutions
- “Graduate alive” HCT campaign for tertiary institutions
- Mass health screening at taxi ranks
- “Isibaya Samadoda” MMC Campaign
- “Test for HIV at least once a year” campaign



MEDICAL MALE CIRCUMCISSION

Male Medical Circumcision
(Accumulative target for 2014/15=42235)



The District is 2587 short of 2014/15 annual target

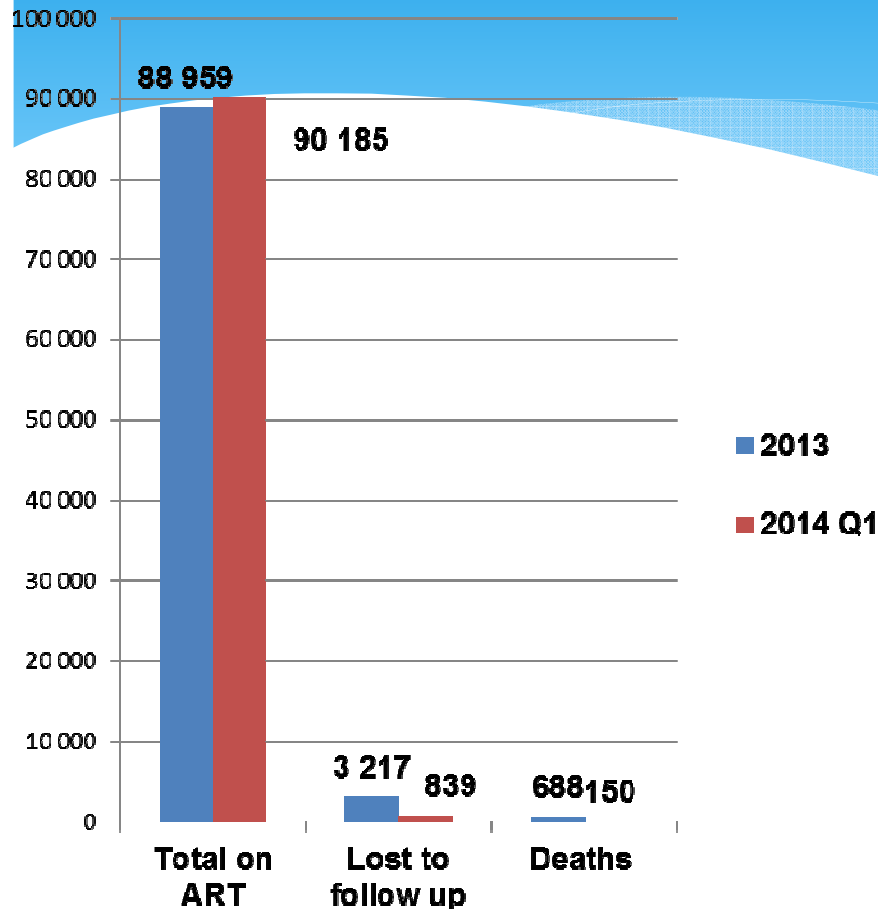
What has the District done:

- Partnership with NGOs on MMC Camps
- Mass mobilization through OSS
- Mobilization by MMC Traditional Coordinators

Scale-up activities that the District will embark on:

- Facilitate Isibaya Samadoda dialogues to promote MMC
- Implement “Phila ndoda uvikele umndeni wakho” campaign
- “Bring your male child for circumcision” campaign

PEOPLE ON ART



2014/15 Targets:

Total people on ART :100 000

Total new ART initiations: 22524

Loss to follow-up remains a challenge

Deaths due to AIDS are gradually declining

What has the District done:

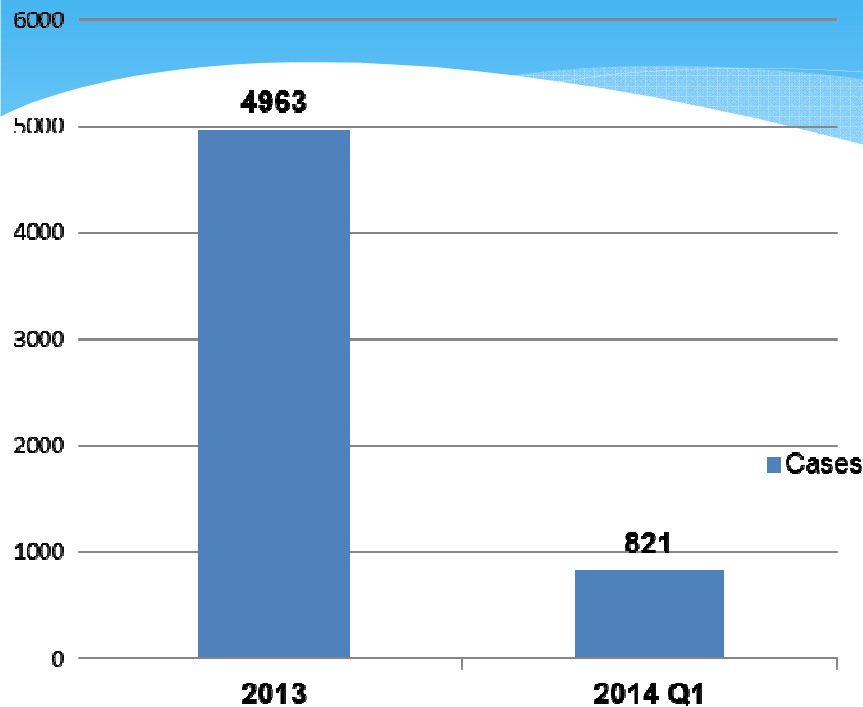
Introduction of HAST defaulter tracer teams who are tracing TB as well as ART defaulters

Scale-up activities that the District will embark on:

Involvement of Family Health Teams and CCGs in tracing clients.

Empower health care workers to use 3Tier.net reporting system to identify early and late missed appointments to facilitate the tracking system.

TB/HIV COINFECTION



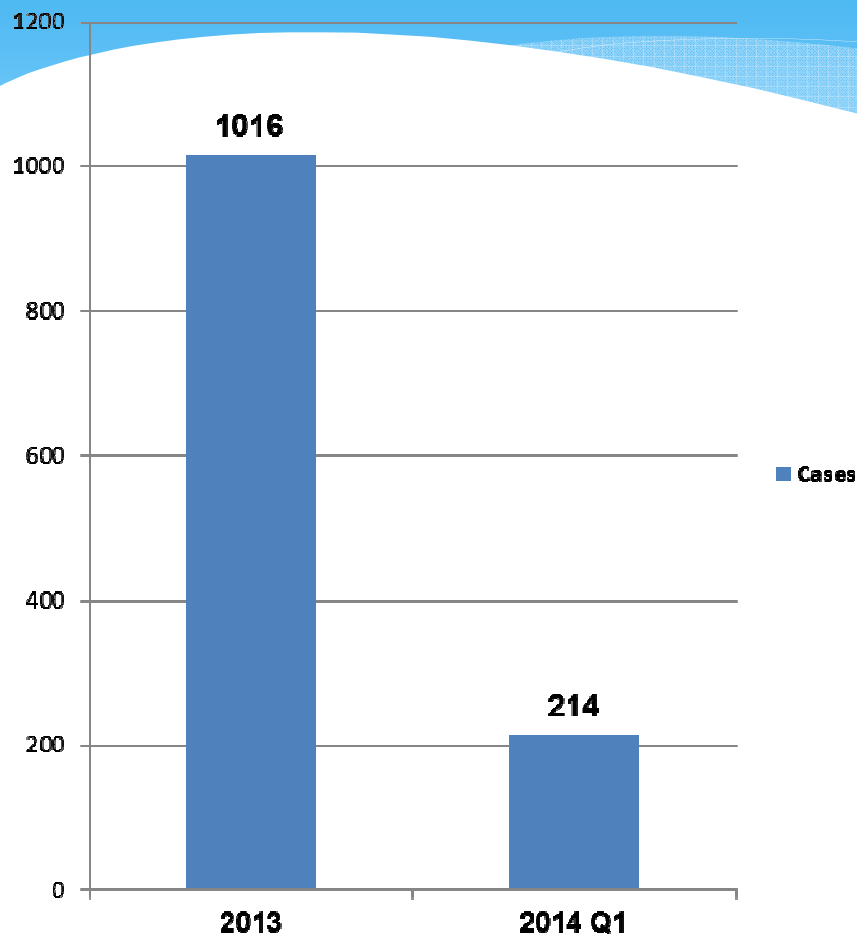
TB/HIV co-infection rate is still very high although it is less if compared to 2013/14 data.

- TB is not only a medical problem but a reflection of social and economic challenges that impact on the poor, the unemployed and the vulnerable.

Activities that the District will embark on:

- Multi-sectoral approach by all relevant government departments and other stakeholders to address the drivers of TB
- Mandatory TB screening for all clients receiving health care services
- Mass TB screening in TB hotspots
- Strengthen Isoniazid Preventive Therapy (IPT) for all HIV clients that do not have TB.

NEW SEXUAL ASSAULT CASES



Sexual assault remains a challenge although there is decline in the number when comparing to 2013/14 data.

29.4% of the total cases in Quarter 1 2014/15 were children under 12 which is a decline from 39% in 2013/14

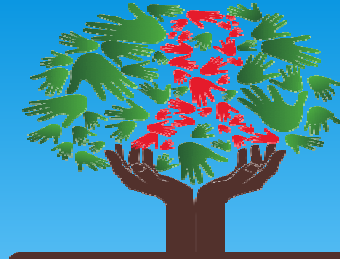
What has the District already done:

- The District has identified municipal wards that are most affected and have conducted community dialogues there.

Activities that the District will embark on:

- Multi-sectoral approach by all relevant government departments and other stakeholders to address the psychosocial drivers of sexual assault and women and child abuse in general

UTHUNGULU



Sukuma Sakhe

THANK YOU

CLLR TVB MCHUNU

